

SST Davit Crane SD750

750 – 500 kg

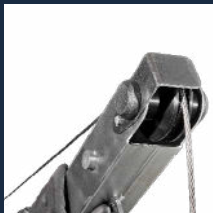
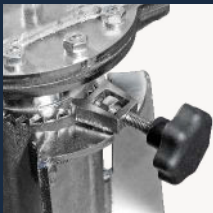
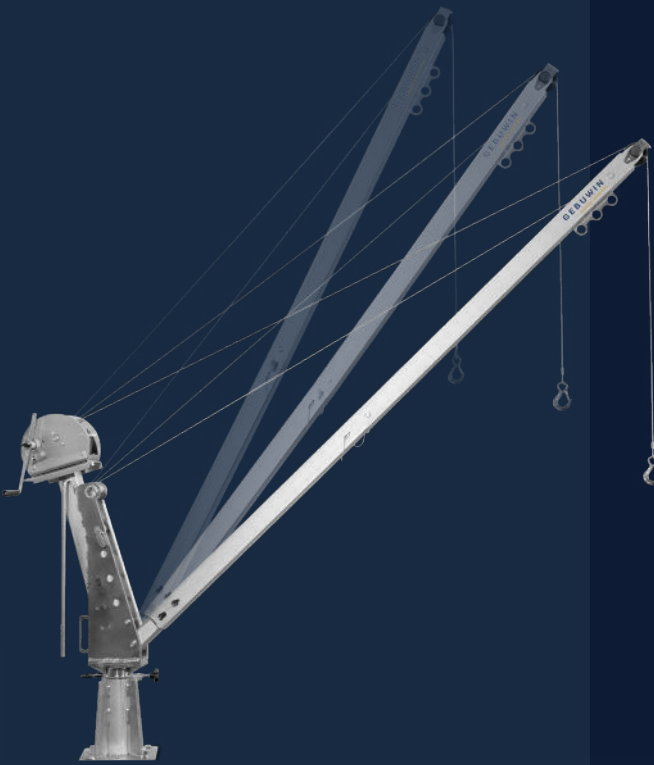
Description

Discover the versatility of our davit crane! With three adjustable positions, this crane effortlessly adapts to your lifting needs. Depending on the position, the lifting capacity varies; up to 750 kg at 1 meter, 600 kg at 1,5 meters and 500 kg at 2 meters.

Thanks to the 360 degree rotation function, you can easily reach the desired position. When in position you can lock the swivel motion for controlled lifting and lowering. The stainless steel 316 finish ensures durability, while you can attach various winches or even a chain hoist to the davit. Ideal for any project where strength and flexibility come together!

Product specifications

- > adjustable reach: 1 meter, 1,5 meters and 2 meters
- > robust and safe lifting davit crane in compliance with EN13157
- > possible to lock swivel motion
- > davit crane consists of 4 parts - fast installation
- > possible to rotate 360° with arm, or belt on end of boom
- > possible to mount different winches on crane: CW700 & TL1500
- > Standard stainless steel 316. CW700 SST316 & TL1500 SST304



Options

- 40 cm height extension
- ATEX certified zone 2 and 22 (EX)
 - CE II 3G Ex IIC T3 Gc, -20°C<T amb <+70°C
 - CE II 3D Ex IIIC T135°C Dc, -20°C<T amb <+70°C
- custom options possible - [on request](#)

Accessories

- floor sockets
- 3 carry bags
- webbing belt to swivel davit for heavy loads

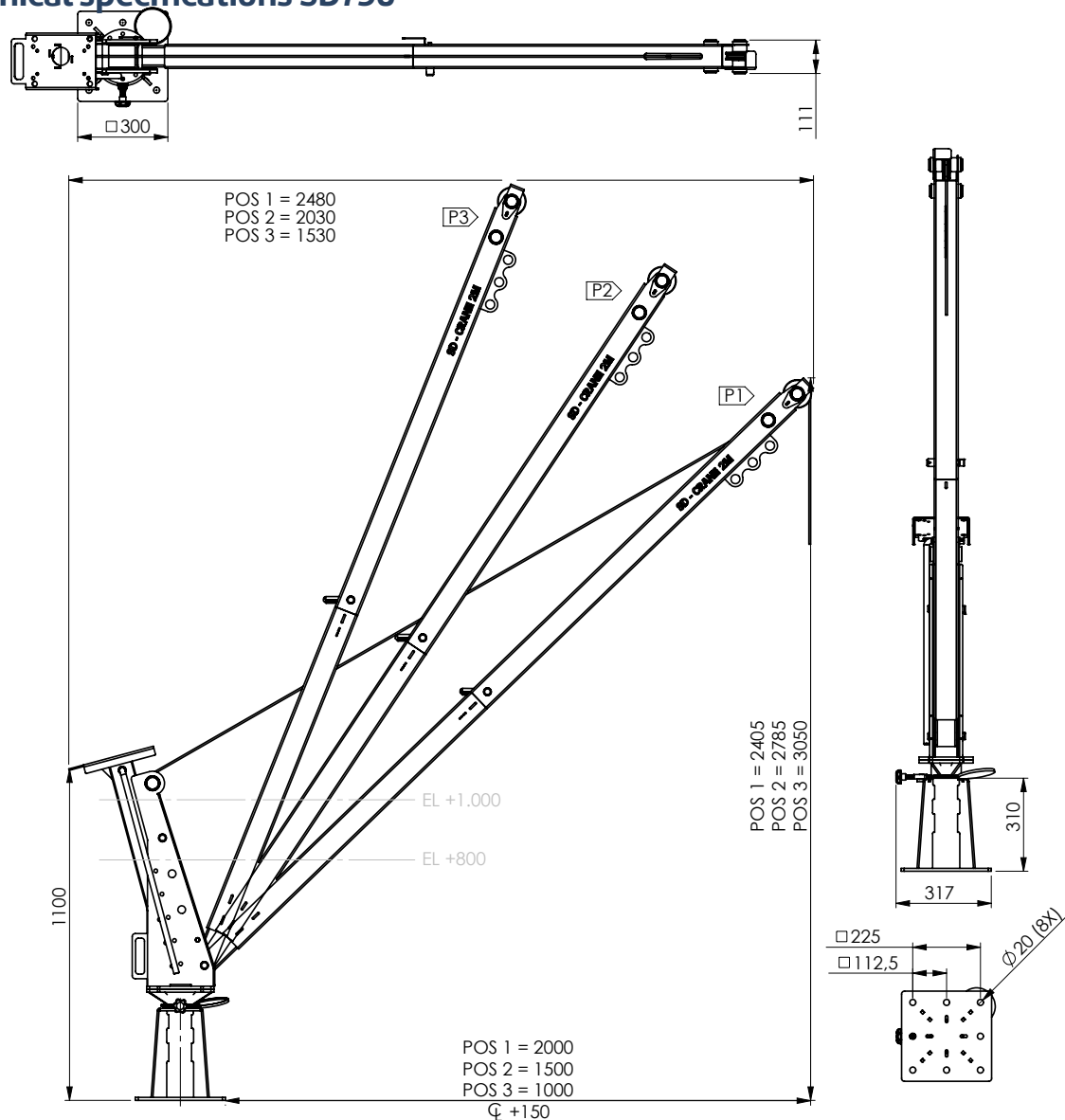
CE Ex  [Product & instruction video on YouTube](#)

GEBUWIN
quality winches

Industrieweg 6, 7102 DZ Winterswijk, The Netherlands
Telephone: +31(0)543 532600 Email: info@gebuwin.com

For more information, visit: www.gebuwin.com

Technical specifications SD750



| Technical specifications | Unit | SD750 SST incl. TL1500 | SD750 SST incl. CW700 |
|---|-----------|---------------------------|--------------------------|
| Max capacity reach 1 meter (1st layer) | kg | 750 | 700 |
| Capacity 4th layer | kg | 750 | 475 |
| Capacity last layer | kg | 750 | 290 |
| Max capacity reach 1,5 meter (1st layer) | kg | 600 | 600 |
| Capacity 4th layer | kg | 600 | 475 |
| Capacity last layer | kg | 600 | 290 |
| Max capacity reach 2 meters (1st layer) | kg | 500 | 500 |
| Capacity 4th layer | kg | 500 | 475 |
| Capacity last layer | kg | 500 | 290 |
| Rope storage 1st layer | m | 3,5 | 2 |
| Rope storage 4th layer | m | 20 | 11 |
| Rope storage top layer | m | 33 | 40 |
| Rope diameter-Ø | mm | 8 | 6 |
| MBL of cable | kN | 41 | 23 |
| Lifting speed | m/min | 1,2 | 2,2 |
| Weight (excl. winch)* | kg | 49 | |
| Weight winch | kg | 27 | 14 |
| Article number (excl. winch) | nr. | 77002012 | 77002011 |

*each part weighs <23kg