



HIGH PRESSURE HYDRAULIC EQUIPMENT PRODUCT OVERVIEW



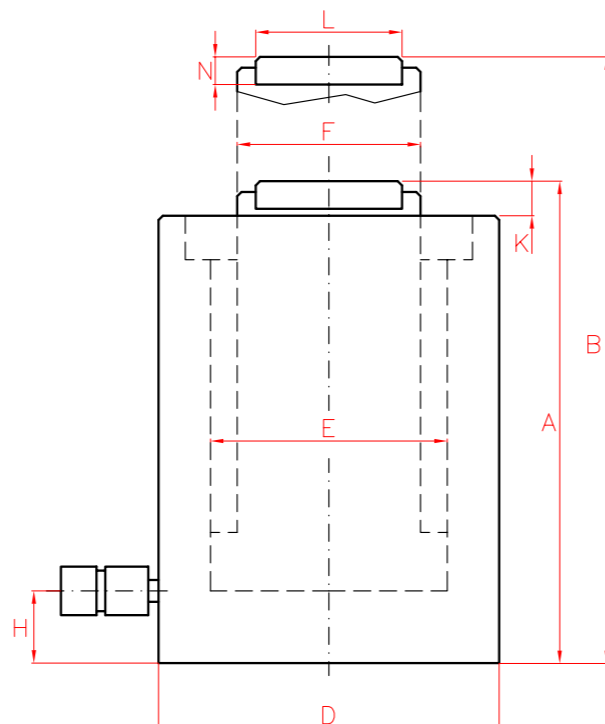
Improved
Models

34-040 ENG 07-2019 © Larzep - Subject to change without notice.

SINGLE ACTING HIGH TONNAGE CYLINDERS, LOAD RETURN

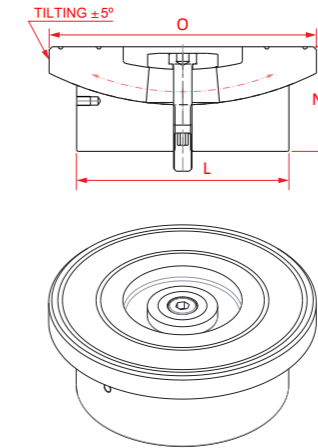


- ✓ Capacity from 140 to 1.000 Tn, stroke up to 300 mm.
- ✓ Load return.
- ✓ Mechanical end of stroke avoids over travel at full pressure.
- ✓ Models available up to 2.000 Tn lifting capacity per cylinder as special.

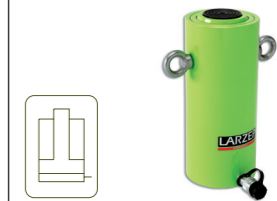


OPTIONAL TILTING SADDLES

Model	L	N	O
LARZEP	mm	mm	mm
CATS50	50,0	34,0	71
CATS100	71,5	30,0	71
CATS150	94,0	39,2	97
CATS200	113,0	43,0	126
CATS300	139,0	68,5	175
CATS400	159,0	78,0	210
CATS500	179,0	77,0	230
CATS600	194,0	81,5	250
CATS800	224,5	86,5	275
CATS1000	249,5	105,5	300



S/A LOAD RETURN CYLINDERS



Type	SPC
Capacity	140 - 1.000 Tn
Stroke	50 - 300 mm
Max. pressure	700 bar

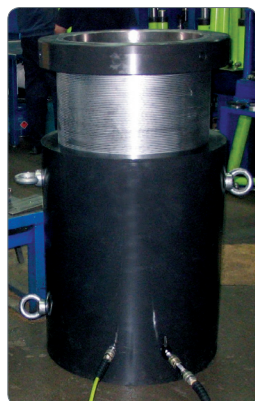
SPC CYLINDERS

Capacity	Stroke	Model	Oil Cap.	A	B	D	E	F	H	K	L	N	Area	Weight
Tn (kN)	mm	LARZEP	cm ³	mm	mm	mm	mm	mm	mm	mm	mm	mm	cm ²	kg
51 (496)	150	SPC05015	1.063	306	456	125	95	75	25	6	50	20	70,9	26
	300	SPC05030	2.126	461	761	125	95	75	25	6	50	20	70,9	38
95 (929)	150	SPC10015	1.991	296	446	170	130	100	30	6	71,5	20	132,7	46
	300	SPC10030	3.982	451	751	170	130	100	30	6	71,5	20	132,7	67
144 (1.407)	50	SPC14005	1.005	213	263	210	160	110	40	6	94	20	201,1	53
	150	SPC14015	3.016	318	468	210	160	110	40	6	94	20	201,1	74
	300	SPC14030	6.032	478	778	210	160	110	40	6	94	20	201,1	104
224 (2.199)	50	SPC22005	1.571	233	283	260	200	140	50	6	113	25	314,2	90
	150	SPC22015	4.712	333	483	260	200	140	50	6	113	25	314,2	120
	300	SPC22030	9.425	498	798	260	200	140	50	6	113	25	314,2	169
310 (3.036)	50	SPC30005	2.169	251	301	305	235	200	55	8	140	30	433,7	137
	150	SPC30015	6.506	357	507	305	235	200	55	8	140	30	433,7	189
	300	SPC30030	13.012	512	812	305	235	200	55	8	140	30	433,7	263
409 (4.008)	50	SPC40005	2.863	275	325	350	270	220	65	10	159,5	30	572,6	197
	150	SPC40015	8.588	382	532	350	270	220	65	10	159,5	30	572,6	262
	300	SPC40030	17.177	538	838	350	270	220	65	10	159,5	30	572,6	357
522 (5.114)	50	SPC50005	3.653	305	355	400	305	250	75	10	179,5	30	730,6	287
	150	SPC50015	10.959	410	560	400	305	250	75	10	179,5	30	730,6	371
	300	SPC50030	21.918	566	866	400	305	250	75	10	179,5	30	730,6	496
611 (5.987)	50	SPC60005	4.276	315	365	430	330	270	80	10	195	30	855,3	342
	150	SPC60015	12.829	420	570	430	330	270	80	10	195	30	855,3	440
	300	SPC60030	25.659	576	876	430	330	270	80	10	195	30	855,3	583
831 (8.149)	50	SPC80005	5.821	335	385	505	385	320	95	10	225	30	1.164,2	504
	150	SPC80015	17.462	446	596	505	385	320	95	10	225	30	1.164,2	649
	300	SPC80030	34.925	606	906	505	385	320	95	10	225	30	1.164,2	858
1.085 (10.644)	50	SPC100005	7.603	365	415	570	440	340	105	10	250	30	1.520,5	696
	150	SPC100015	22.808	476	626	570	440	340	105	10	250	30	1.520,5	869
	300	SPC100030	45.616	636	936	570	440	340	105	10	250	30	1.520,5	1.116

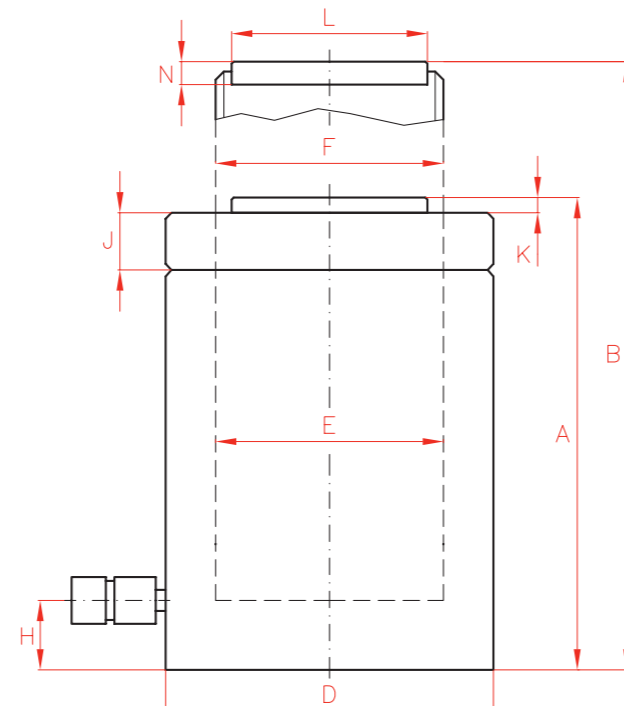
SINGLE ACTING LOCK NUT CYLINDERS, LOAD RETURN



- ✔ Capacity from 30 to 1.000 Tn, stroke up to 300 mm.
- ✔ The lock nut holds the load mechanically for extended periods of time.
- ✔ Load return as standard. Spring return available as special.
- ✔ Lock nut tested under 50% overload.
- ✔ Hydraulic end of stroke overflow port. Whitout stop ring. Red band warning.
- ✔ Mechanical end of stroke available as special.
- ✔ Body, nut and saddle black nitrided to improve corrosion and wear resistance.
- ✔ Used for foundation supporting, bridge construction and shipbuilding.
- ✔ For confined spaces, use STX models.



DTC models, double acting lock nut cylinders available upon request.



S/A LOCK NUT CYLINDERS



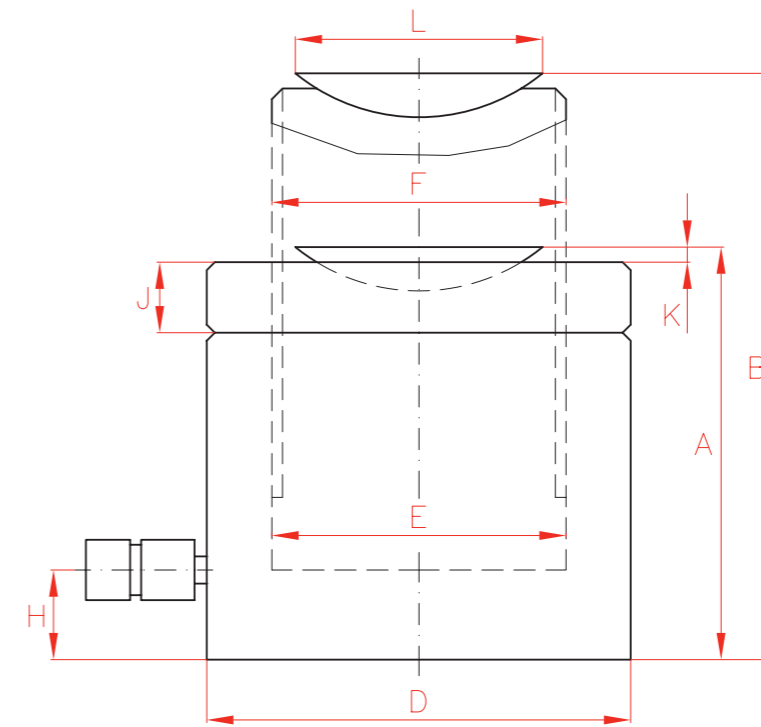
Type	STC
Capacity	30 - 1.000 Tn
Stroke	50 - 300 mm
Max. pressure	700 bar

Capacity Tn (kN)	Stroke mm	Model LARZEP	Oil Cap. cm ³	A mm	B mm	D mm	E mm	F mm	H mm	J mm	K mm	L mm	N mm	Area cm ²	Weight kg
30 (303)	50	STC03005	221	141	191	100	75	Tr 75x4	20	20	3	50	20	44,2	9
	100	STC03010	442	191	291	100	75	Tr 75x4	20	20	3	50	20	44,2	12
	150	STC03015	663	246	396	100	75	Tr 75x4	20	20	3	50	20	44,2	15
	200	STC03020	884	296	496	100	75	Tr 75x4	20	20	3	50	20	44,2	18
	250	STC03025	1.104	355	605	100	75	Tr 75x4	20	20	3	50	20	44,2	22
	300	STC03030	1.325	405	705	100	75	Tr 75x4	20	20	3	50	20	44,2	25
51 (496)	50	STC05005	354	153	203	125	95	Tr 95x4	25	21	3	50	20	70,9	14
	100	STC05010	709	203	303	125	95	Tr 95x4	25	21	3	50	20	70,9	19
	150	STC05015	1.063	261	411	125	95	Tr 95x4	25	21	3	50	20	70,9	25
	200	STC05020	1.418	311	511	125	95	Tr 95x4	25	21	3	50	20	70,9	30
	250	STC05025	1.772	366	616	125	95	Tr 95x4	25	21	3	50	20	70,9	35
	300	STC05030	2.126	416	716	125	95	Tr 95x4	25	21	3	50	20	70,9	40
95 (929)	50	STC10005	664	180	230	170	130	Tr 130x6	30	31	3	71,5	20	132,7	31
	100	STC10010	1.327	230	330	170	130	Tr 130x6	30	31	3	71,5	20	132,7	40
	150	STC10015	1.991	285	435	170	130	Tr 130x6	30	31	3	71,5	20	132,7	50
	200	STC10020	2.655	335	535	170	130	Tr 130x6	30	31	3	71,5	20	132,7	59
	250	STC10025	3.318	391	641	170	130	Tr 130x6	30	31	3	71,5	20	132,7	69
	300	STC10030	3.982	441	741	170	130	Tr 130x6	30	31	3	71,5	20	132,7	78
144 (1.407)	50	STC14005	1.005	195	245	210	160	Tr 160x6	40	38	3	94	20	201,1	52
	100	STC14010	2.011	245	345	210	160	Tr 160x6	40	38	3	94	20	201,1	65
	150	STC14015	3.016	309	459	210	160	Tr 160x6	40	38	3	94	20	201,1	83
	200	STC14020	4.021	359	559	210	160	Tr 160x6	40	38	3	94	20	201,1	96
	250	STC14025	5.027	415	665	210	160	Tr 160x6	40	38	3	94	20	201,1	111
	300	STC14030	6.032	465	765	210	160	Tr 160x6	40	38	3	94	20	201,1	125
224 (2.192)	150	STC22015	4.712	328	478	260	200	Tr 200x6	50	40	3	113	25	314,2	134
	300	STC22030	9.425	488	788	260	200	Tr 200x6	50	40	3	113	25	314,2	201
310 (3.037)	150	STC30015	6.506	351	501	305	235	Tr 235x6	55	45	5	140	30	433,7	197
	300	STC30030	13.012	511	811	305	235	Tr 235x6	55	45	5	140	30	433,7	289
409 (4.008)	150	STC40015	8.588	370	520	350	270	Tr 270x6	65	50	5	159	30	572,6	274
	300	STC40030	17.177	530	830	350	270	Tr 270x6	65	50	5	159	30	572,6	395
522 (5.114)	150	STC50015	10.959	395	545	400	305	Tr 305x6	75	60	5	179	30	730,6	378
	300	STC50030	21.918	555	855	400	305	Tr 305x6	75	60	5	179	30	730,6	535
611 (5.987)	50	STC60005	4.276	311	361	430	330	Tr 330x6	80	80	5	194	30	855,3	347
	150	STC60015	12.829	421	571	430	330	Tr 330x6	80	80	5	194	30	855,3	472
	300	STC60030	25.659	581	881	430	330	Tr 330x6	80	80	5	194	30	855,3	654
831 (8.149)	50	STC80005	5.821	348	398	505	385	Tr 385x6	95	90	5	224	30	1.164,2	537
	150	STC80015	17.462	458	608	505	385	Tr 385x6	95	90	5	224	30	1.164,2	709
	300	STC80030	34.925	618	918	505	385	Tr 385x6	95	90	5	224	30	1.164,2	959
1.085 (10.644)	50	STC100005	7.603	392	442	570	440	Tr 440x6	105	105	5	249	30	1.520,5	772
	150	STC100015	22.808	502	652	570	440	Tr 440x6	105	105	5	249	30	1.520,5	991
	300	STC100030	45.616	673	973	570	440	Tr 440x6	105	105	5	249	30	1.520,5	1.332

SINGLE ACTING PANCAKE CYLINDERS, LOCK NUT, TILTING SADDLE, LOAD RETURN



- ✓ Capacity from 50 to 500 Tn, stroke up to 50 mm.
- ✓ Load return. Lock nut tested under 50% overload.
- ✓ The lock nut holds the load mechanically for extended periods of time.
- ✓ Hydraulic end of stroke overflow port. Without stop ring. Red band warning.
- ✓ Built-in tilting saddle to improve side load resistance.
- ✓ Body, nut and saddle black nitrided to improve corrosion and wear resistance.
- ✓ Used in confined spaces.



S/A LOCK NUT CYLINDERS



Type	STX
Capacity	50 - 500 Tn
Stroke	45 - 50 mm
Max. pressure	700 bar

STX
Built-in Tilting Saddle



SX - SMX
Single Acting Low Profile Cylinders,
Load or Spring Return



Capacity		Stroke	Model	Oil Cap.	A	B	D	E	F	H	J	K	L	Area	Weight
Tn	kN	mm	LARZEP	cm ³	mm	mm	mm	mm	mm	mm	mm	mm	mm	cm ²	kg
51	496	50	STX05004	355	125	175	125	95	Tr 95x4	20	21	6	92	70,8	11
95	929	45	STX10004	597	137	182	165	130	Tr 130x6	23	31	8	126	132,7	22
144	1.407	45	STX15004	905	148	193	205	160	Tr 160x6	28	38	9	148	201,1	39
224	2.199	45	STX23004	1.413	155	200	255	200	Tr 200x6	32	40	10	157	314,2	62
310	3.036	45	STX30004	1.952	173	218	310	235	Tr 235x6	38	45	11	215	433,7	97
409	4.008	45	STX40004	2.577	180	225	350	270	Tr 270x6	44	50	10	260	572,6	130
522	5.114	45	STX50004	3.388	195	240	400	305	Tr 305x6	50	60	10	295	730,6	184

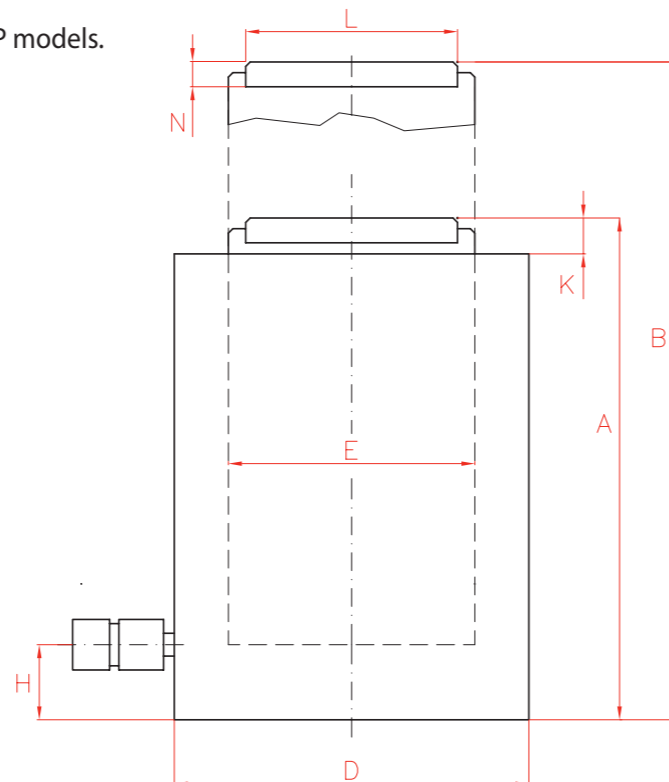
SINGLE ACTING LOW HEIGHT CYLINDERS, HIGH TONNAGE, LOAD RETURN



- ✓ Capacity from 140 to 1.000 Tn, stroke up to 300 mm.
- ✓ Load return. For weighing, lifting and positioning applications in Civil Engineering.
- ✓ Hydraulic end of stroke overflow port. Without stop ring. Red band warning.
For mechanical stop ring see SPC models.
- ✓ For confined spaces and loads up to 150 Tn, see SX and SP models.
- ✓ Black nitrided body, up to 220 Tn.

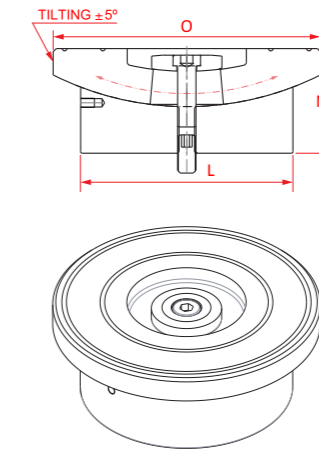


Larzep designs and manufactures special cylinders up to 1.000 Tn capacity to place load cells for pile testing applications.



OPTIONAL TILTING SADDLES

Model	L	N	O
LARZEP	mm	mm	mm
CATS150	94,0	39,2	97
CATS200	113,0	43,0	126
CATS300	139,0	68,5	175
CATS400	159,0	78,0	210
CATS500	179,0	77,0	230
CATS600	194,0	81,5	250
CATS800	224,5	86,5	275
CATS1000	249,5	105,5	300



S/A LOAD RETURN CYLINDERS



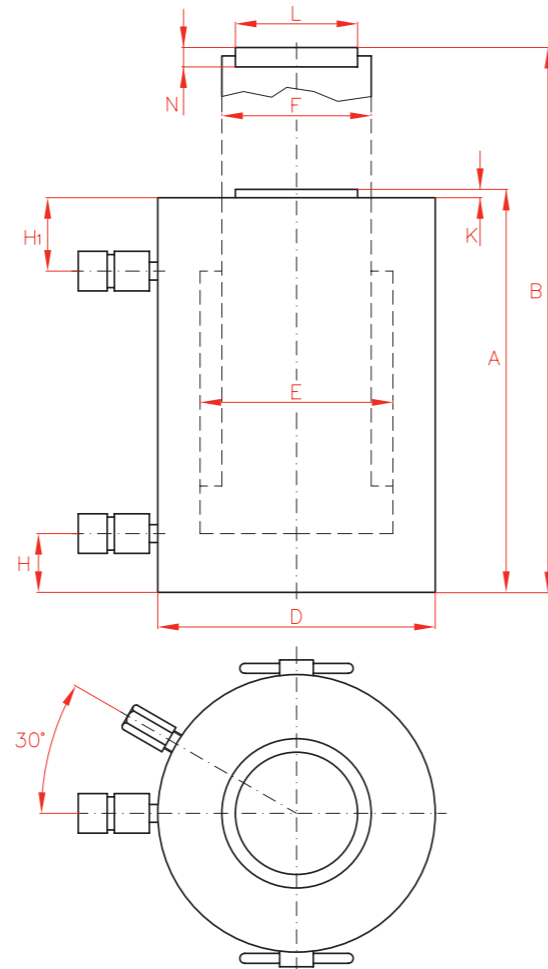
Type	SSC
Capacity	140 - 1.000 Tn
Stroke	50 - 300 mm
Max. pressure	700 bar

Capacity	Stroke	Model	Oil Cap.	A	B	D	E	H	K	L	N	Area	Weight
Tn (kN)	mm	LARZEP	cm ³	mm	mm	mm	mm	mm	mm	mm	mm	cm ²	kg
144 (1.407)	50	SSC14005	1.005	160	210	210	160	40	6	94	20	201,1	43
	150	SSC14015	3.016	274	424	210	160	40	6	94	20	201,1	74
	300	SSC14030	6.032	430	730	210	160	40	6	94	20	201,1	116
224 (2.199)	50	SSC22005	1.571	180	230	260	200	50	6	113	20	314,2	75
	150	SSC22015	4.712	291	441	260	200	50	6	113	20	314,2	120
	300	SSC22030	9.425	451	751	260	200	50	6	113	20	314,2	187
310 (3.036)	50	SSC30005	2.169	193	243	305	235	55	8	140	30	433,7	110
	150	SSC30015	6.506	309	459	305	235	55	8	140	30	433,7	176
	300	SSC30030	13.012	469	769	305	235	55	8	140	30	433,7	267
409 (4.008)	50	SSC40005	2.863	215	265	350	270	65	10	159	30	572,6	161
	150	SSC40015	8.588	325	475	350	270	65	10	159	30	572,6	244
	300	SSC40030	17.177	485	785	350	270	65	10	159	30	572,6	364
522 (5.114)	50	SSC50005	3.653	225	275	400	305	70	10	179	30	730,6	221
	150	SSC50015	10.959	335	485	400	305	70	10	179	30	730,6	329
	300	SSC50030	21.918	495	795	400	305	70	10	179	30	730,6	486
611 (5.987)	50	SSC60005	4.276	236	286	430	330	80	10	194	30	855,3	268
	150	SSC60015	12.829	346	496	430	330	80	10	194	30	855,3	393
	300	SSC60030	25.659	506	806	430	330	80	10	194	30	855,3	574
831 (8.149)	50	SSC80005	5.821	263	313	505	385	95	10	224	30	1.164,2	411
	150	SSC80015	17.462	373	523	505	385	95	10	224	30	1.164,2	583
	300	SSC80030	34.925	533	833	505	385	95	10	224	30	1.164,2	834
1.085 (10.644)	50	SSC100005	7.603	292	342	570	440	105	10	249	30	1.520,5	582
	150	SSC100015	22.808	402	552	570	440	105	10	249	30	1.520,5	801
	300	SSC100030	45.616	573	873	570	440	105	10	249	30	1.520,5	1.142

DOUBLE ACTING HIGH TONNAGE CYLINDERS

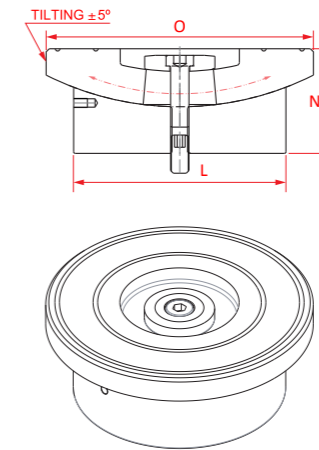


- ✓ Capacity from 50 to 1.000 Tn, stroke up to 300 mm.
- ✓ Safety valve to prevent accidental over-pressure.
- ✓ On request, DDC cylinders can be supplied with threads or other special features such as lock nuts, sleeves, etc.
- ✓ Models available up to 2.000 Tn lifting capacity per cylinder as a special.



OPTIONAL TILTING SADDLES

Model	L	N	O
LARZEP	mm	mm	mm
CATS50	50,0	34,0	71
CATS100	71,5	30,0	71
CATS150	94,0	39,2	97
CATS200	113,0	43,0	126
CATS300	139,0	68,5	175
CATS400	159,0	78,0	210
CATS500	179,0	77,0	230
CATS600	194,0	81,5	250
CATS800	224,5	86,5	275
CATS1000	249,5	105,5	300



D/A HIGH TONNAGE CYLINDERS



Type	DDC
Capacity	50 - 1.000 Tn
Stroke	50 - 300 mm
Max. pressure	700 bar

DDC CYLINDERS

Capacity	Stroke	Model	Oil Cap.	A	B	D	E	F	H	H1	K	L	N	Area	Weight
Tn (kN)	mm	LARZEP	cm ³	mm	mm	mm	mm	mm	mm	mm	mm	mm	mm	cm ²	kg
51 (496)	50	DDC05005	354	206	256	125	95	75	25	75	6	50	20	70,9	19
	150	DDC05015	1.063	306	456	125	95	75	25	75	6	50	20	70,9	26
	300	DDC05030	2.126	461	761	125	95	75	25	80	6	50	20	70,9	38
95 (929)	50	DDC10005	664	196	246	170	130	100	30	60	6	75	20	132,7	33
	150	DDC10015	1.991	296	446	170	130	100	30	60	6	75	20	132,7	46
	300	DDC10030	3.982	451	751	170	130	100	30	65	6	75	20	132,7	67
144 (1.407)	50	DDC14005	1.005	213	263	210	160	110	40	65	6	94	20	201,1	53
	150	DDC14015	3.016	318	468	210	160	110	40	70	6	94	20	201,1	74
	300	DDC14030	6.032	478	778	210	160	110	40	80	6	94	20	201,1	104
224 (2.199)	50	DDC22005	1.571	233	283	260	200	140	50	75	6	113	25	314,2	90
	150	DDC22015	4.712	333	483	260	200	140	50	75	6	113	25	314,2	120
	300	DDC22030	9.425	498	798	260	200	140	50	85	6	113	25	314,2	169
310 (3.036)	50	DDC30005	2.169	251	301	305	235	200	55	85	8	140	30	433,7	137
	150	DDC30015	6.506	357	507	305	235	200	55	85	8	140	30	433,7	189
	300	DDC30030	13.012	512	812	305	235	200	55	85	8	140	30	433,7	263
409 (4.008)	50	DDC40005	2.863	275	325	350	270	220	65	95	10	159,5	30	572,6	197
	150	DDC40015	8.588	382	532	350	270	220	65	95	10	159,5	30	572,6	262
	300	DDC40030	17.177	538	838	350	270	220	65	95	10	159,5	30	572,6	357
522 (5.114)	50	DDC50005	3.653	305	355	400	305	250	75	110	10	179,5	30	730,6	287
	150	DDC50015	10.959	410	560	400	305	250	75	110	10	179,5	30	730,6	371
	300	DDC50030	21.918	566	866	400	305	250	75	110	10	179,5	30	730,6	496
611 (5.987)	50	DDC60005	4.276	315	365	430	330	270	80	115	10	195	30	855,3	342
	150	DDC60015	12.829	420	570	430	330	270	80	115	10	195	30	855,3	440
	300	DDC60030	25.659	576	876	430	330	270	80	115	10	195	30	855,3	583
831 (8.149)	50	DDC80005	5.821	335	385	505	385	320	95	120	10	225	30	1.164,2	504
	150	DDC80015	17.462	446	596	505	385	320	95	120	10	225	30	1.164,2	649
	300	DDC80030	34.925	606	906	505	385	320	95	120	10	225	30	1.164,2	858
1.085 (10.644)	50	DDC100005	7.603	365	415	570	440	340	105	130	10	250	30	1.520,5	696
	150	DDC100015	22.808	476	626	570	440	340	105	130	10	250	30	1.520,5	869
	300	DDC100030	45.616	636	936	570	440	340	105	130	10	250	30	1.520,5	1.116