



# INSTRUCTIONS & MAINTENANCE SHEET

## HYDROTEST PUMPS

HAP0070, HAP0130, HAP0180, HAP0250, HAP0400,  
HAP0740, HAP1300, HAP1900, HAP2900



## DECLARATION OF CONFORMITY

### DECLARACION DE CONFORMIDAD

LARZEP, S.A.

**E**

Dirección: Avda. Urtiaga, 6  
48269 Mallabia ESPAÑA

Declaramos bajo nuestra exclusiva responsabilidad la conformidad de los productos a los que refiere esta declaración, con las disposiciones de la directiva: 2006/42/CE

### DECLARATION OF CONFORMITE

Nous, LARZEP, S.A.

**F**

Adresse: Avda. Urtiaga, 6  
48269 Mallabia SPAIN

Déclarons sous notre seule responsabilité que les produits auxquels se réfère cette déclaration sont conformes aux dispositions des Directives: 2006/42/EC

### DECLARAÇÃO DE CONFORMIDADE

Nós, LARZEP, S.A.

**P**

Endereço: Avda. Urtiaga, 6  
48269 Mallabia SPAIN

Declaramos, sob nossa única responsabilidade, que os seguintes produtos, incluídos nesta declaração estão em conformidade com o disposto na Directiva: 2006/42/EC

### ÖVERENSSTEMMELSEERKLÄRING

Vi, LARZEP, S.A.

**DK**

Adresse: Avda. Urtiaga, 6  
48269 Mallabia SPAIN

Erklærer på eget ansvar, at følgende produkter som er omfattet af denne erklæringen, er i overensstemmelse med bestemmelse i Direktiv: 2006/42/EC

### ERKLÆRINGOM OVERENSSTEMMELSE

Vi, LARZEP, S.A.

**N**

Adresse: Avda. Urtiaga, 6  
48269 Mallabia SPAIN

Erklærer på eget ansvar, at følgende produkter som dekkes av denne erklæringen, er i overensstemmelse med bestemmelse i Direktiv: 2006/42/EC

### ÜBEREINSTIMMUNGSEKTLÄRUNG

Wir, LARZEP, S.A.

**D**

Anschrift: Avda. Urtiaga, 6  
48269 Mallabia SPAIN

Erklären auf eigene Verantwortung, daß folgende Produkte, auf die sich diese Erklärung bezieht, mit den Bedingungen der Direktiven, 2006/42/EC Cübereinstimmen.

### DECLARATION OF CONFORMITY

We, LARZEP, S.A.

**GB**

Address: Avda. Urtiaga, 6  
48269 Mallabia SPAIN

Declare under our sole responsibility that the following products to which this declaration relates conform with the provisions of Directives: 2006/42/EC

### DICHIARAZIONE DI CONFORMITÀ

Noi, LARZEP, S.A.

**I**

Indirizzo: Avda. Urtiaga, 6  
48269 Mallabia SPAIN

Dichiaro sotto la nostra esclusiva responsabilità che i prodotti ai quali questa dichiarazione si riferisce sono conformi quanto previsto dalle Direttive: 2006/42/EC

### VAATIMUSTEMUKAISUUSVAKUUTUS.

Me, LARZEP, S.A.

**FIN**

Osoite: Avda. Urtiaga, 6  
48269 Mallabia SPAIN

Vakuutamme yksinomaan omalla vastuullamme, että seuraavat tuotteet, joihin tämä vakuutus liittyy, ovat seuraavien Direktiivien vaatimusten mukaisia: 2006/42/EC

### VERKLARINGVAN OVEREENKOMST.

Wij, LARZEP, S.A.

**NL**

Adres: Avda. Urtiaga, 6  
48269 Mallabia SPAIN

Verklaren geheel onder eigen verantwoordelijkheid dat de volgende producten, waarop deze verklaring heeft in overeenstemming zijn met de bepalingen van Richtlijn: 2006/42/EC

### FÖRSÄKRAN OM ÖVERESSTÄMMELSE

Vi, LARZEP, S.A.

**S**

Adress: Avda. Urtiaga, 6  
48269 Mallabia SPAIN

Försäkrar under eget ansvar att följande produkter som omfattas av denna försäkran är i överensstämmelse med villkoren i Direktiv: 2006/42/EC

Tipo, Type, Typ, Tyyppi.

**SM / SH / SP / SMP / SPR / SX / SMX / ST / STR / STX / SL / SAM / SAH / SAT / SATM / SSR / T / TE / TD / D / DH / DDR / DAH / DDA / DM / DI / JM / JH / JP / Z / ZR / W / WP / X / HAM / HAE / HAZ / HAG / HAS / HFM / HFE / HAP / HAT / HAB / WI / CK / CC / CN / FU / FV / FZ / FA / CY / AA / AU / CT / C / KC / LAS / LAX / CB / CH / CM / PH**

**A / AB / AC / B / AF / F / HN / HL / DLG / VA / VB / VC / VZ / ECE / ECM / ECZ / EE / EM / EZ / CA / CS**

**AZ / AP / AR / AV / AS / AT / AX / AY / AM**

Mallabia, ESPAÑA 2009 / 12 / 29

Lugar y fecha, place and date, lieu et date, plats och datum, paikka ja päivämäärä, udstedelsessted og-dato, ort und datum, plaats en datum, local e data, luogo e data.

**LARZEP, S.A.**

Nombre y firma, name and signature, nom et signature, namn och underskrift, nimi ja nimikirjoitus, navn og underskrift, name und underskrift, naam en handtekening, nome e assinatura, nome e firma.

INDEX	PAGE
Declaration of Conformity	2
Index	3
Warranty	3
Description	3
Operating instructions	4
Important Safety notes	4
Trouble shooting	5
Servicing	5
Pneumatic scheme	6
Drawing	7

## WARRANTY

**LARZEP, S.A.** guarantees its products against all design and manufacturing defects for two years from the date of purchase. This guarantee does not include the ordinary wear of both metal and non-metal parts, abuse, using the equipment beyond its rated capacity and any wear or damage incurred as a result of using a hydraulic fluid which is not recommended by **LARZEP, S.A.**

Please note that if the equipment is disassembled or serviced by anyone other than an authorized service dealer or by **LARZEP, S.A.**, this guarantee is rendered null and void.

In the event of a warranty claim, return the equipment to **LARZEP, S.A.** or the authorized dealer which sold you the hydraulic equipment. **LARZEP, S.A.** will repair or replace the faulty equipment, whichever is deemed most appropriate. **LARZEP, S.A.** shall not be held liable for any consequential damages or losses, which may occur as a result of faulty equipment.

## DESCRIPTION

The pack provides a source of hydraulic power and is fitted with a pressure gauge to monitor the hydraulic outlet pressure. The range of the pressure gauge installed normally exceeds the pump output capability, and is selected to suit the model of pump fitted. The gauge may read BAR, PSI or be dual scale.

The pump draws fluid from a hydraulic reservoir fitted to the pack and delivers the fluid to a hydraulic pressure outlet connection. The pressure output line has a pressure release valve installed which when opened will allow any generated hydraulic outlet pressure to return back to the reservoir.

The reservoir is provided with a filler cap with inlet filter. If a non-plastic reservoir is fitted a sight level indicator is fitted.

The air pressure applied controls the pump output. A compressed air supply is required to operate the pack. An air filter, air pressure regulator with gauge, oil lubricator and an air ON/OFF valve are fitted prior to the pump air inlet port connection.



## **OPERATING INSTRUCTIONS**

Check the pack reservoir is fitted with hydraulic oil (ISO 10) or water (if water service pack). New pack is dispatched with the reservoir drained. The reservoir capacity is approximately 7 litres and is filled via the filler cap.

Check the air lubricator bottle is filled (use any light grade lubricating oil - SAE 15). To top up undo the screw on top of the bottle and top up. **Safely disconnect the air supply prior to filling the bottle.** The lubricator is factory set to deliver 1 drop every 25 strokes of the pump. The knob on top of the lubricator is used to affect this setting.

Connect an air supply 70-100psi compressed air to the pack inlet (1/2" BSP) Minimum recommended inlet air pipe size 1/2 bore for best performance. Air requirement is 28 S.C.F.M.

The item requiring hydraulic pressure may now be fitted to the hydraulic pressure outlet connection **using only fittings and /or tubing that must be suitable for at least the maximum pressure the pump can achieve.**

When initially starting the pump, have the pressure release valve open and allow the pump to cycle for approximately two minutes, this will bleed the system of any air. Turn the air ON/OFF valve, to the ON position and adjust the air pressure regulating valve (starting the pump) and regulate the pump to cycle at a steady speed of around 100 cycles per minute.

### **TO APPLY HYDRAULIC PRESSURE:**

- Stop the pump by closing the ON/OFF air valve.
- Close the hydraulic pressure release valve.
- Open the pressure-regulating valve fully so no air pressure is applied to the pump.
- Open the air ON/OFF valve and gradually increase air pressure by closing the pressure-regulating valve. This will allow hydraulic pressure to build up in the system.

The hydraulic output pressure is directly proportional to the air inlet pressure applied to the pump.

When releasing hydraulic pressure, it is important to do so slowly to prevent possible damage to the hydraulic pressure gauge.

Check the lubricator feed is approximately 1 drop per 25 strokes of the pump and adjust as necessary. Refer to operating instructions.

## **IMPORTANT SAFETY NOTES**

Before operating the pack always make sure pipe connections are clean and fully tightened up.

Never tighten or loosen connections while they are under pressure.

The pack cannot be pressurised without being connected to an item to be pressurized unless a blanking plug is fitted to the outlet port.

Use only tube and fittings suitable for the maximum working pressure of the pump unit.

Should any black oil be visible around the pump air motor exhaust. It should not give rise to concern, as lubricated air is feed to the pump, and excess oil will be discarded via the exhaust.

## TROUBLE SHOOTING

### **PUMP WILL NOT START:**

- Check the mains air supply is reaching the pump inlet air port.
- Check that regulated air pressure is available via the air pressure gauge.
- Check the air valve is turned ON.

If the pump will not actuate it will require inspection.

### **PUMP WILL NOT BUILD UP PRESSURE:**

- Insufficient air pressure causing the pump to stall.
- Pressure release valve, not closed. Close to build up pressure.
- Insufficient hydraulic fluid, available from the reservoir.
- Tube connections loose in system, check and rectify.
- Tank outlet blocked, check and clean if necessary.

### **FAULT IN THE PUMP:**

- Check for Dirt inlet and/or outlet check valve.
- Hydraulic piston seal leaking. Signalled by oil/water emissions from the pump air exhaust.

## SERVICING

The pack is designed for long and trouble free service, in a rugged environment with a minimum of servicing.

Regular servicing is confined to:

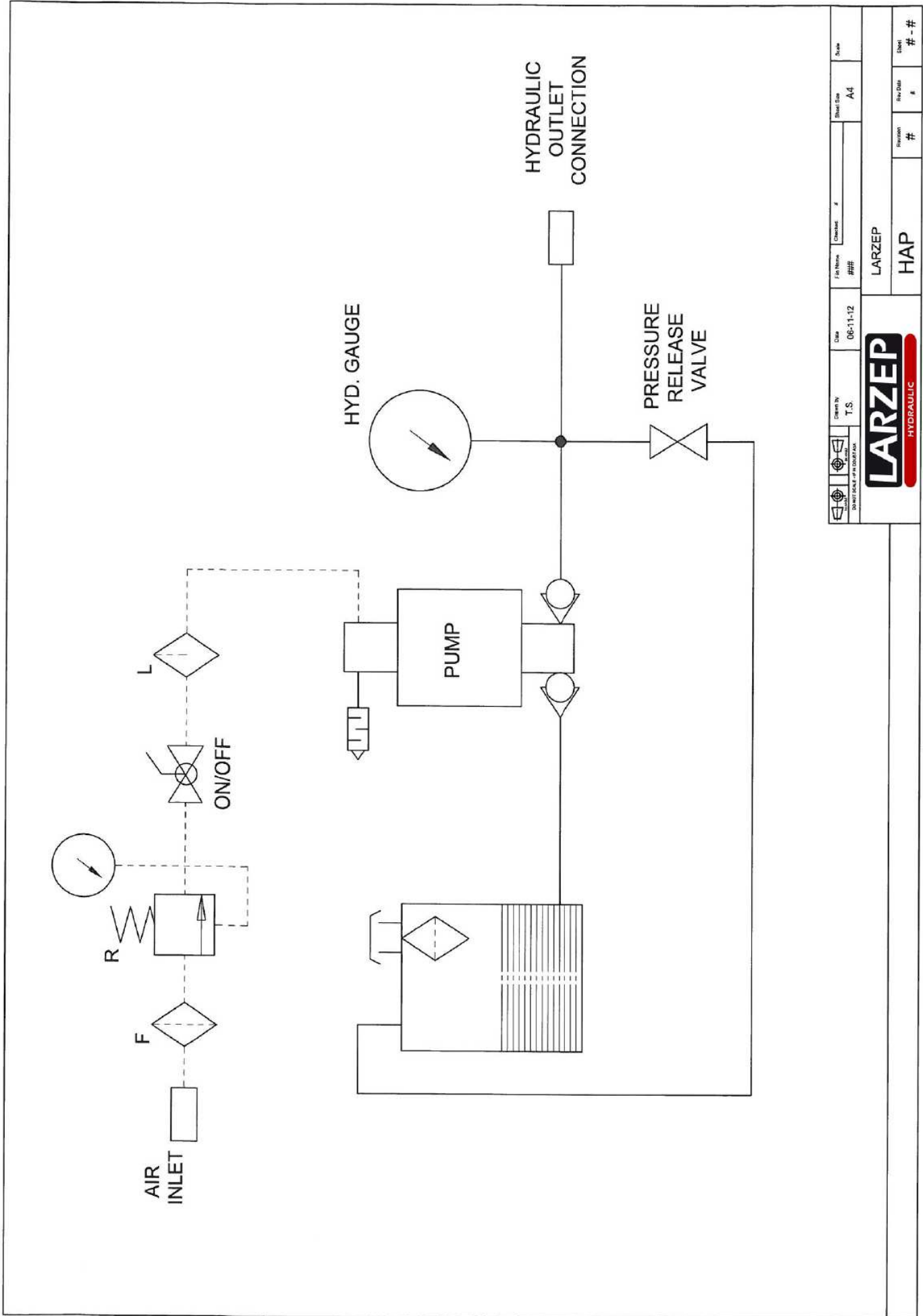
- Topping up the air lubricator.
- Regular draining of the air filter bowl.
- Occasional cleaning of the air filter bowl using warm soapy water only.

The pump is greased with a Silicone based lubrication, if the pump is used infrequently the Air Motor lubrication should be re-applied (grease can become stiff when the pump is not used for a long period and affect pump start up).

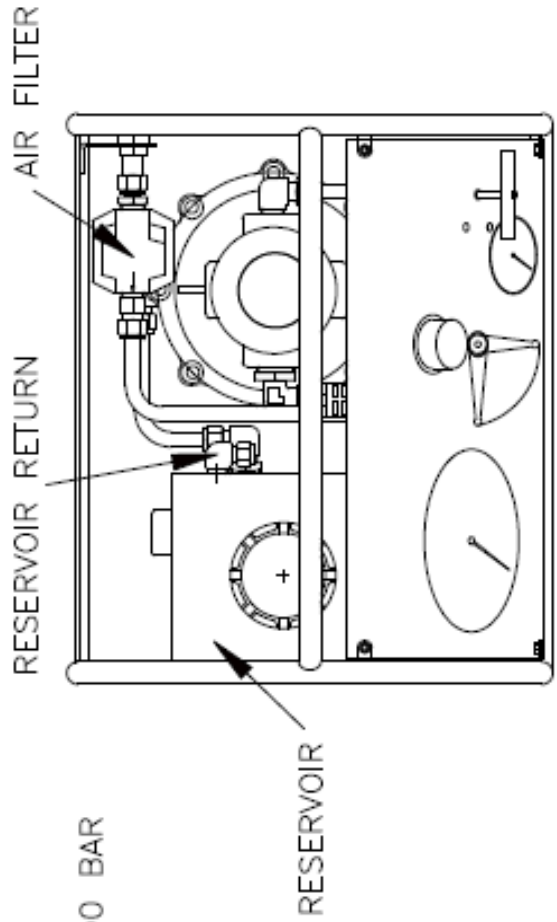
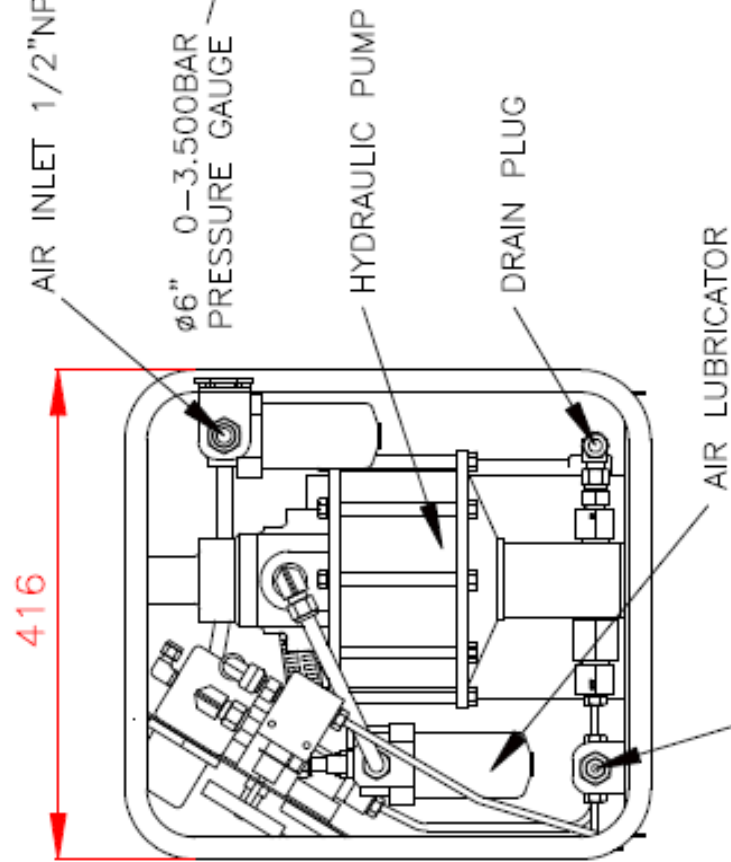
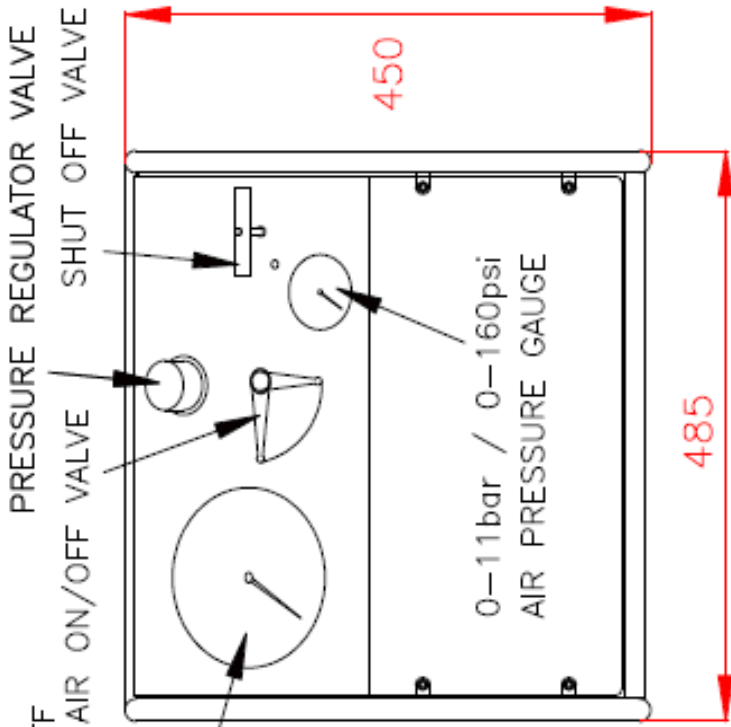
**CAUTION:** Shut off the air supply before removing the air filter bowl.

The pump is the only item that will occasionally require servicing.

**The pump must always be handled and repaired by qualified personnel.**



	Scale A4	Checkmark # #	Date 06-11-12	Drawn by T.S.	File Name ###	Sheet # - #
	LARZEP			HAP		Revision # #



- \* 3/8" NPTF FROM 70 TO 740 BAR
- \* 9/16"-18UNF FROM 1300 TO 2900 BAR





**LARZEP, S.A.**

Avenida Urtiaga, 6  
48269 Mallabia, Spain  
Tel. +34 943 171200  
Fax. +34 943 174166  
e-mail: [info@larzep.com](mailto:info@larzep.com)  
[www.larzep.com](http://www.larzep.com)