

**SINGLE ACTING LOW HEIGHT CYLINDERS, LOAD OR SPRING RETURN**

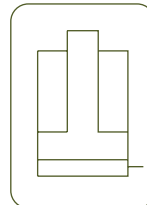
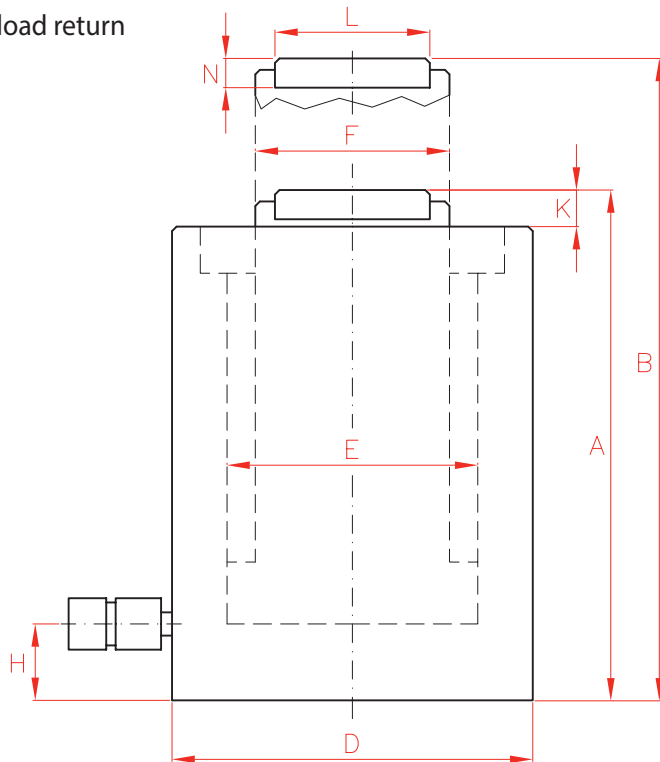


- ✓ Capacity from 10 to 100 Tn, stroke up to 150 mm.
- ✓ Two versions: SP for load return, and SMP for spring return.
- ✓ Low profile for use in confined spaces: machinery positioning, tool fastening, load tests.
- ✓ Body and saddle black nitrided to improve corrosion and wear resistance.
- ✓ Models from 30 to 100 Tn can mount optional tilting saddle.

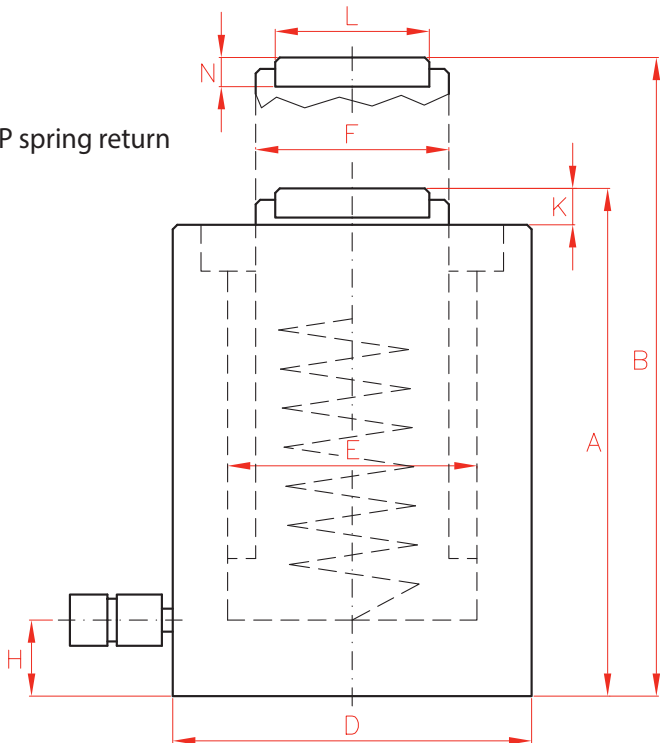
Capacity		Stroke	Model	Model	Oil Cap.	A	B	D	E	F	H	K	
Tn	kN	mm	LARZEP	LARZEP	cm <sup>3</sup>	mm	mm	mm	mm	mm	mm	mm	
10	109	40	SP01004	SMP01004	64	89	129	66	45	36	14*	2	
20	214	40	SP02004	SMP02004	125	101	141	90	63	56	14*	2	
30	303	60	SP03006	SMP03006	265	125	185	102	75	60	14*	2	
50	486	60	SP05006	SMP05006	425	125	185	127	95	80	16*	2	
100	911	60	SP10006	SMP10006	796	141	201	175	130	110	26	2	
		150	SP10015	SMP10015	1.990	254	404	175	130	110	26	2	



SP load return



SMP spring return



SINGLE ACTING CYLINDERS



Type	<b>SP - SMP</b>
Capacity	10 - 100 Tn
Stroke	40 - 150 mm
Max. pressure	700 bar

J Cylinder and pump sets



P.76

SPR Single Acting High Tonnage Low Height Cylinder



P.24

AZ3 Coupler inclined 10°



P.114

AZ04 Optional Tilting Saddles available



P.118

	L	N	Area cm <sup>2</sup>	Weight kg	Model	Model	With tilting saddle	
	mm	mm			LARZEP	LARZEP	A	Model
	30	-	16	3	<b>SP01004</b>	<b>SMP01004</b>	-	-
	42	-	31	5	<b>SP02004</b>	<b>SMP02004</b>	-	-
	45	11	44	8	<b>SP03006</b>	<b>SMP03006</b>	150	AZ0401
	61	12	71	12	<b>SP05006</b>	<b>SMP05006</b>	152	AZ0402
	88	14	133	25	<b>SP10006</b>	<b>SMP10006</b>	174	AZ0404
	88	14	133	43	<b>SP10015</b>	<b>SMP10015</b>	287	AZ0404