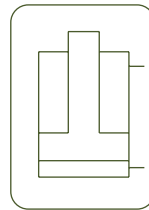


ALUMINIUM DOUBLE ACTING CYLINDERS



- ✓ Capacity from 50 to 200 Tn, stroke up to 300 mm.
- ✓ Made out of high strength aluminium alloy.
- ✓ All aluminium parts are treated to improve resistance and extend working life.
- ✓ Lightweight. Over 40% weight reduction when compared with steel equivalent.
- ✓ Fitted with steel base plate and saddle for wear resistance.
- ✓ Internal safety valve to prevent accidental over-pressure.
- ✓ Not suitable for high cycle applications.



Larzep designs and manufactures special cylinders and fixing systems. For further information, please contact our Internal Sales department.



Step by step aluminium cylinders. Stage lifting.



ALUM. DOUBLE ACTING CYLINDERS



Type	DDA
Capacity	50 - 200 Tn
Stroke	50 - 300 mm
Max. pressure	700 bar

DDA CYLINDERS

DDR
Double Acting High Tonnage Cylinders



P.60

D
Double Acting Cylinders



P.56

DAH
Aluminium Double Acting
Hollow Piston Cylinders



P.70

AZ04
Optional Tilting Saddles available



P.118

HBM / HBE
Powerpack



P.88

Z22107
Air Hydraulic Pump

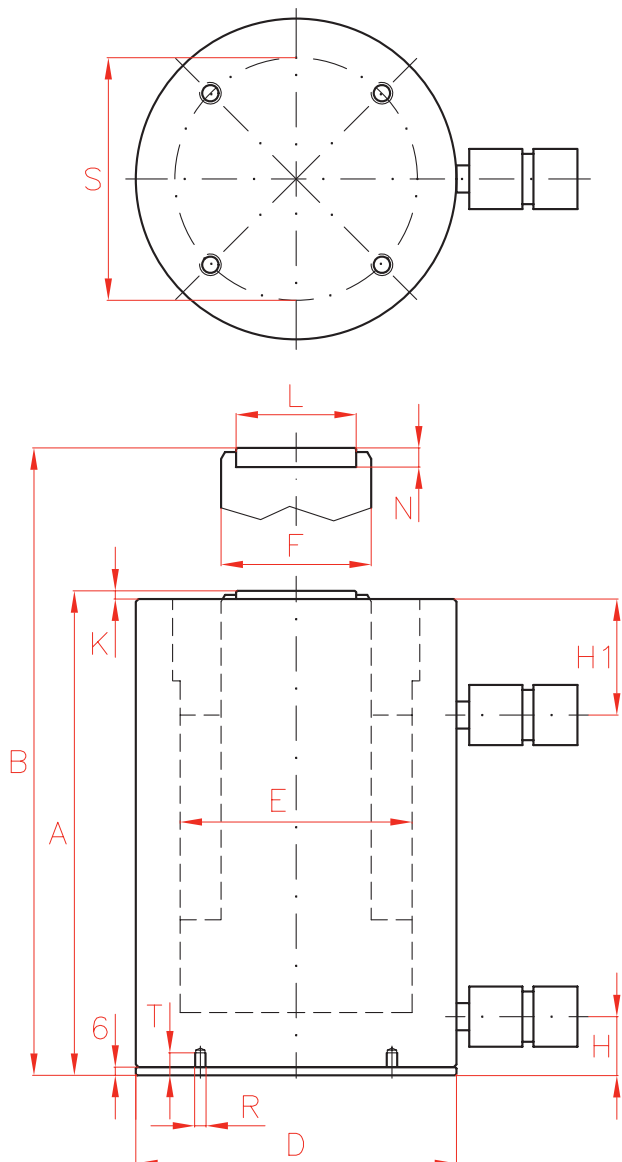


P.86

X
Double Acting Hand Pumps



P.80

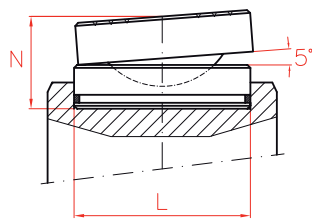


Capacity	Stroke	Model	Capacity (kN)	Oil Cap.	A	
Tn	mm	LARZEP	Push	cm ³	mm	
50	50	DDA05005	487	354	198	
	100	DDA05010	487	709	248	
	150	DDA05015	487	1.063	298	
	200	DDA05020	487	1.418	348	
	250	DDA05025	487	1.772	398	
	300	DDA05030	487	2.126	448	
75	50	DDA07505	713	520	215	
	100	DDA07510	713	1.039	265	
	150	DDA07515	713	1.558	315	
	200	DDA07520	713	2.077	365	
	250	DDA07525	713	2.597	415	
	300	DDA07530	713	3.116	465	
100	50	DDA10005	911	664	230	
	100	DDA10010	911	1.327	280	
	150	DDA10015	911	1.991	330	
	200	DDA10020	911	2.655	380	
	250	DDA10025	911	3.318	430	
	300	DDA10030	911	3.982	480	
140	50	DDA14005	1.380	1.005	255	
	100	DDA14010	1.380	2.010	305	
	150	DDA14015	1.380	3.016	355	
	200	DDA14020	1.380	4.021	405	
	250	DDA14025	1.380	5.026	455	
	300	DDA14030	1.380	6.031	505	
200	50	DDA20005	1.946	1.418	259	
	100	DDA20010	1.946	2.835	309	
	150	DDA20015	1.946	4.253	359	
	200	DDA20020	1.946	5.670	409	
	250	DDA20025	1.946	7.088	459	
	300	DDA20030	1.946	8.506	509	



OPTIONAL TILTING SADDLES

Model	L	N	Weight
LARZEP	mm	mm	kg
AZ0401	45	36	0,4
AZ0402	61	39	0,8
AZ0404	88	47	2,2
AZ0405	111	52	4,0



P.118



Type

DDA

Capacity

50 - 200 Tn

Stroke

50 - 300 mm

Max. pressure

700 bar

	B	D	E	F	H	H1	K	L	N	S	R	T	Area	Weight	Model	With tilting saddle	
	mm	mm	mm	mm	mm	mm		mm	mm	mm		mm	cm ²	kg	LARZEP	A	Model
	248	135	95	75	26	60	7	61	12	115	M6	19	71	8,0	DDA05005	225	AZ0402
	348	135	95	75	26	60	7	61	12	115	M6	19	71	9,7	DDA05010	275	AZ0402
	448	135	95	75	26	60	7	61	12	115	M6	19	71	11,3	DDA05015	325	AZ0402
	548	135	95	75	26	60	7	61	12	115	M6	19	71	12,9	DDA05020	375	AZ0402
	648	135	95	75	26	60	7	61	12	115	M6	19	71	14,6	DDA05025	425	AZ0402
	748	135	95	75	26	60	7	61	12	115	M6	19	71	16,2	DDA05030	475	AZ0402
	265	160	115	90	32	70	6	61	12	140	M6	19	104	11,8	DDA07505	242	AZ0402
	365	160	115	90	32	70	6	61	12	140	M6	19	104	14,0	DDA07510	292	AZ0402
	465	160	115	90	32	70	6	61	12	140	M6	19	104	16,3	DDA07515	342	AZ0402
	565	160	115	90	32	70	6	61	12	140	M6	19	104	18,6	DDA07520	392	AZ0402
	665	160	115	90	32	70	6	61	12	140	M6	19	104	20,8	DDA07525	442	AZ0402
	765	160	115	90	32	70	6	61	12	140	M6	19	104	23,1	DDA07530	492	AZ0402
	280	180	130	110	32	70	5	88	14	160	M6	19	133	16,1	DDA10005	263	AZ0404
	380	180	130	110	32	70	5	88	14	160	M6	19	133	19,2	DDA10010	313	AZ0404
	480	180	130	110	32	70	5	88	14	160	M6	19	133	22,2	DDA10015	363	AZ0404
	580	180	130	110	32	70	5	88	14	160	M6	19	133	25,3	DDA10020	413	AZ0404
	680	180	130	110	32	70	5	88	14	160	M6	19	133	28,3	DDA10025	463	AZ0404
	780	180	130	110	32	70	5	88	14	160	M6	19	133	31,3	DDA10030	513	AZ0404
	305	225	160	110	43	85	6	88	14	200	M6	19	201	28,2	DDA14005	288	AZ0404
	405	225	160	110	43	85	6	88	14	200	M6	19	201	32,3	DDA14010	338	AZ0404
	505	225	160	110	43	85	6	88	14	200	M6	19	201	36,4	DDA14015	388	AZ0404
	605	225	160	110	43	85	6	88	14	200	M6	19	201	40,5	DDA14020	438	AZ0404
	705	225	160	110	43	85	6	88	14	200	M6	19	201	44,6	DDA14025	488	AZ0404
	805	225	160	110	43	85	6	88	14	200	M6	19	201	48,7	DDA14030	538	AZ0404
	309	265	190	140	51	85	6	111	15	225	M6	19	284	40,0	DDA20005	296	AZ0405
	409	265	190	140	51	85	6	111	15	225	M6	19	284	45,9	DDA20010	346	AZ0405
	509	265	190	140	51	85	6	111	15	225	M6	19	284	51,8	DDA20015	396	AZ0405
	609	265	190	140	51	85	6	111	15	225	M6	19	284	57,8	DDA20020	446	AZ0405
	709	265	190	140	51	85	6	111	15	225	M6	19	284	63,7	DDA20025	496	AZ0405
	809	265	190	140	51	85	6	111	15	225	M6	19	284	69,6	DDA20030	546	AZ0405