




221/25 VA


Trägerklammer / Beam Clamp / Griffe de suspension


ISO 9001
certified company

PREMIUM LINE

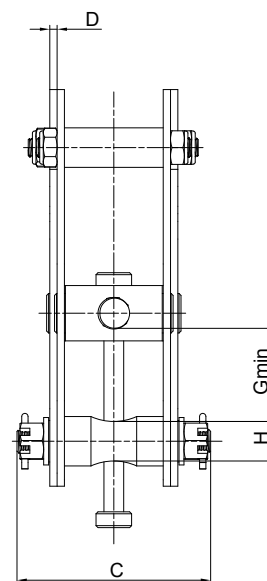
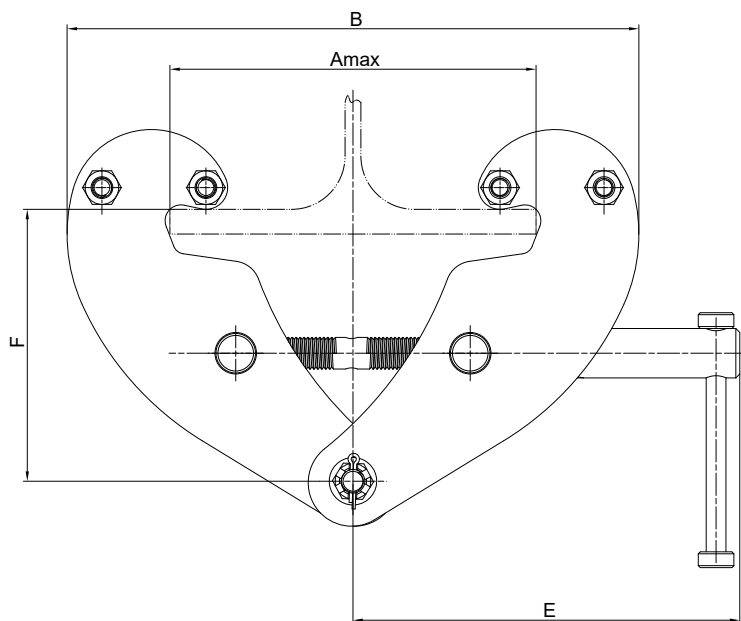
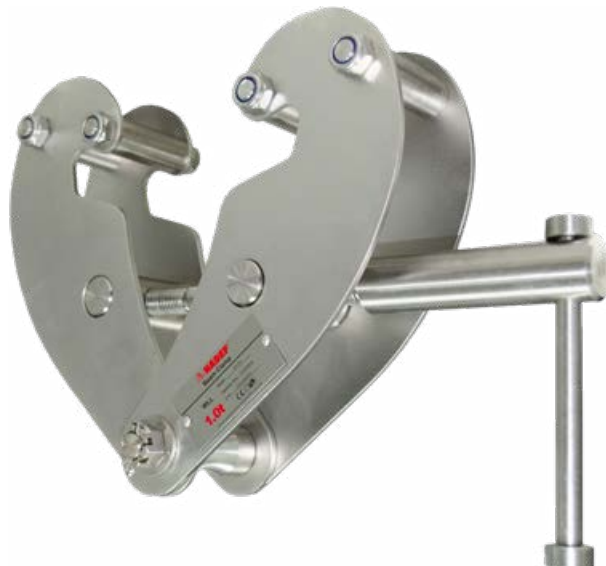
STAIN-
LESS
STEEL

- 

Vollständig aus Edelstahl gefertigt
Completely made of stainless steel
Fabriqué entièrement en inox
- 

Extrem korrosionsbeständig
Ensuring maximum protection against corrosion
Protège efficacement contre la corrosion
- 

Für Reinräume geeignet
Suitable for cleanroom environment
Convient pour utilisation en salle blanche



Tragfähigkeit	Flanschbreite von – bis							F				Gewicht
Capacity	Flange width from – to	A	B		C	D	E	min.	max.	G	H	Weight
Capacité	Largeur de fer de – à	max.	min.	max.	mm	mm	mm	mm	mm	mm	mm	Poids
kg	mm	mm	mm		mm	mm	mm	mm		mm	mm	kg
1000	75–230	240	192	367	98	4	194	102	154	22	20	4,1
2000	75–230	240	192	367	106	6	194	102	154	22	20	4,9
3000	80–345	355	243	520	159	8	241	133	223	38	24	10,0
5000	80–345	355	243	520	167	10	241	133	223	35	33	11,8